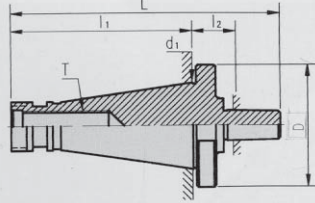
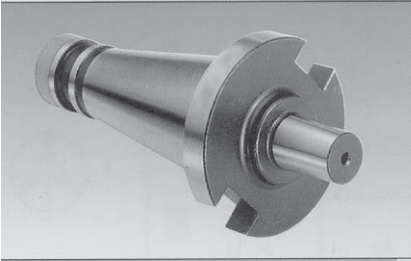


NT DRILL CHUCK ARBOR

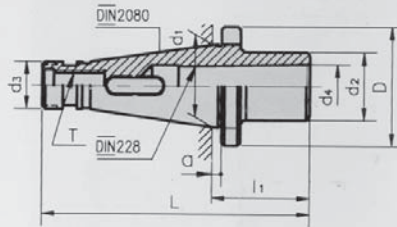


When ordering, please do clearly specify either Whit Or Metric DRAW BAR THREADS desired.

TYPE	D	d ₁	L	l ₁	l ₂	1/2" W12 or M12 × 1.75P 5/8" W11 or M16 × 2.0P
NT30 × JT6	49	31.75	111	68.4	18.6	
NT40 × JT6	63	44.45	138	93.4	20.6	

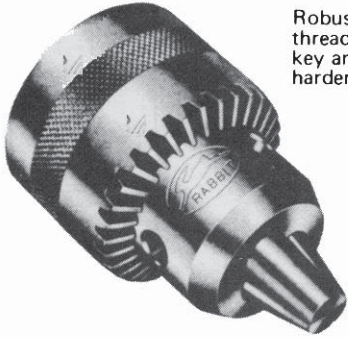


MILLING MACHINE ADAPTOR



When you are ordering this product, be sure to tell us the DRAW BAR SIZE you are going to use.

SIZE	l ₁	D	d ₁	d ₂	d ₃	d ₄	L	a	T
NT30 × MTA3	65	49	31.75	40	17.15	23.825	133.4	1.6	1/2" W12 M12 × 1.75P
NT40 × MTA3	65	63	44.45	40	25.07	23.825	158	1.6	5/8" W11 or M16 × 2.0P



Robust design. All wearing parts, such as jaws, threaded ring, front part of chuck body and key are made from case-hardening steel and hardened. High gripping power.



MTI-13XH-J6
MTI-16XH-J6

KEYLESS

SIZE	CAPACITY	JACOB'S TAPER
13 mm	0 - 13 mm	No. 6
16 mm	3 - 16 mm	No. 6

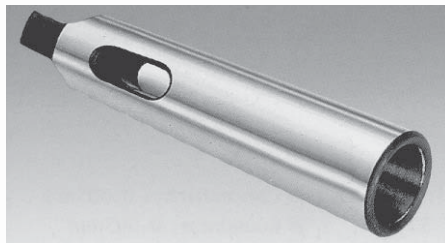
KEY TYPE

SIZE	CAPACITY	JACOB'S TAPER
1/4"	1/64"-1/4"	No. 1
3/8"	1/32"-3/8"	No. 2
1/2"	1/32"-1/2"	No. 6

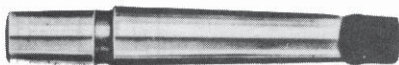
THREAD
3/8-24
1/2-20
1/2-20

DRILL SLEEVES

- 1MT - 2MT DS-1-2
- 2MT - 3MT DS-2-3
- 3MT - 4MT DS-3-4
- 4MT - 5MT DS-4-5



TAPER ARBORS



- 2MT - J1 DCA-2MT-J1
- 2MT - J2 DCA-2MT-J2
- 2MT - J6 DCA-2MT-J6
- 3MT - J6 DCA-3MT-J6